

Meeting:	Children's wellbeing scrutiny
Meeting date:	Monday 16 July 2018
Title of report:	Children and Young People's Plan 2018 - 2023
Report by:	Cabinet member young people and children's wellbeing

Classification

Open

Decision type

Budget and policy framework

Wards affected

(All Wards);

Purpose and summary

The Children and Young People Scrutiny Committee has identified the Children and Young People's Plan 2018 - 2023 as part of its work programme for pre-decision call-in ahead of its presentation to full Council for approval. It is presented to the scrutiny committee for the consideration of any recommendations to the Cabinet Member concerning the content of the Plan.

The draft Children and Young People's Plan 2018 – 2023 (CYPP) includes priorities which will enable continued service improvement to support positive outcomes for all children and young people throughout Herefordshire. The plan establishes key priorities and outlines how they will be achieved through work undertaken by all participating partner agencies.

More detailed delivery plans for each priority are being formulated alongside partners and relevant multi-agency groups that will identify specific actions, governance arrangements and expected timescales for realising the goals set out in the CYP Plan.

Recommendation(s)

That:

- (a) **The Children and young people’s scrutiny committee provide comment on the attached draft in order to inform development of the final version of Herefordshire’s final Children and Young People’s Plan;**
- (b) **That Children and young people’s scrutiny committee considers its key role and any necessary action it should take in helping to achieve the proposed priorities**

Alternative options

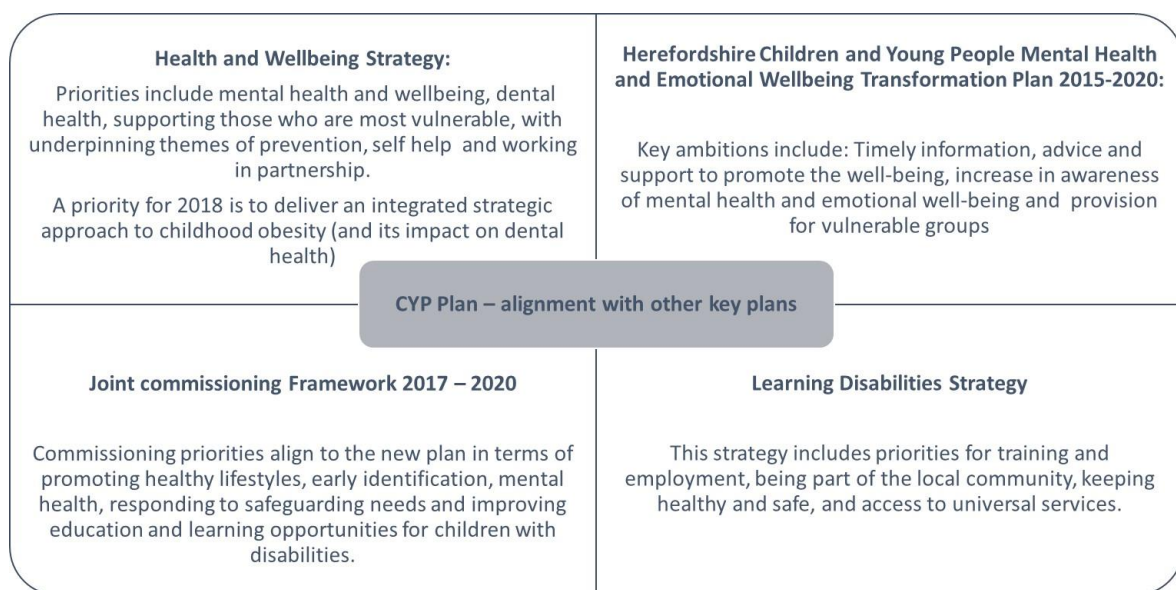
1. The Children and Young People’s Partnership could continue to work within the 2015-2018 plan. This approach however, will mean the partnership is working to deliver priorities that are out of date, do not acknowledge achievements made since 2015, may not reflect current views of children and young people in Herefordshire, may not respond to trends highlighted within the latest Joint Strategic Needs Assessment, and does not enable the effective alignment to other relevant strategies across the partnership.

Key considerations

2. The Children and Young People’s plan is an integral component of the Herefordshire Health and Wellbeing Strategy and together they form the strategic agenda of the Herefordshire Health and Wellbeing Board relating to children and young people.
3. The current Children and Young People’s Plan covers the period of 2015 – 2018, with the aim of ensuring that ‘The children and young people of Herefordshire have a great start in life and grow up healthy, happy and safe within supportive family environments’.
4. The Children and Young People’s partnership have therefore been preparing for the development of a new plan which highlights progress over the current plan period, review the current evidence base on issues relating to local children and young people, and clearly set out improvement plans from now onwards.
5. The Herefordshire Children and Young People’s Partnership oversees the development and delivery of the Children and Young People’s (CYP) Plan. The partnership includes representatives from:

Herefordshire Council
Herefordshire Clinical Commissioning Group
West Mercia Police
West Mercia Youth Justice Board
2gether NHS Foundation Trust
Healthwatch
Herefordshire Voluntary Organisations Support Service

6. The plan is an integral component of the Herefordshire Health and Wellbeing Strategy and together they drive the strategic agenda of the Herefordshire Health and Wellbeing Board relating to children and young people. Key partnership strategies including (but not limited to) Herefordshire Children and Young People Mental Health and Emotional Wellbeing Transformation Plan 2015-2020, the Joint commissioning Framework 2017 – 2020, and the Learning Disability Strategy have been considered alongside the development of the new CYP plan to ensure it aligns and supports their delivery:



7. A review of Herefordshire’s current performance relating to the previous 2015-2018 priorities has been undertaken. Each priority area has been reviewed to determine areas of progress and to highlight areas where further focus is necessary over the coming years to further improve outcomes for children and young people in Herefordshire.

8. Achievements and challenges (2015-2018):

- a. Priority 1 - Early Help: The Family First programme has successfully supported over 890 families (target of 600) in need of early help, of which 198 have achieved sustainable change. Lead workers have been identified for each family who have co-ordinated relevant services to meet the family’s needs. The programme continues to broaden its work with partners to support early identification, ensuring families are identified at an early stage.

The Early help offer was highlighted as an area to be strengthened throughout the engagement work undertaken, particularly with professionals, and a new Early Help Strategy will be prepared to consider actions that will help to tackle ongoing challenges for families in Herefordshire including domestic abuse and neglect.

- b. Priority 2 - Early Years: The percentage of mothers who breastfeed their babies in the first 48hrs after delivery has improved (from 67.7% in 2014/15 to 74.8% in 2016/17) and is 0.3% above the national average. Seventy five per cent of children at the end of the reception year achieved a good level of development and Herefordshire was again in the top quartile of local authorities in England in 2017. The number of 3 & 4 year old children benefitting from early education in a good/ outstanding provider has risen from 87% in 2015 to 94% in 2017.

It is recognised that the prevalence children who are overweight or obese is still an issues that needs to be addressed locally, and although improvements have been recently reported in terms of oral health, Herefordshire continues to perform below the national average.

- c. Priority 3 - Mental health and emotional wellbeing: A joint review into special educational needs and disabilities by the CQC and Ofsted in September 2016 acknowledged the low waiting times and flexible provision by Child and

Adolescent Mental Health Services. Herefordshire has achieved improvements in both waiting times for assessment and treatment for these services. The Herefordshire Children and Young People Mental Health and Emotional Wellbeing Transformation Plan 2015-2020 has been refreshed, including a clear roadmap for further improvement.

Engagement highlighted mental health as a key area that must be reflected within the new CYP plan. Increasing awareness and early support around emotional wellbeing and mental health were particular areas of focus.

- d. Priority 4 - Children and young people in need of safeguarding: Herefordshire has improved the local response to child sexual exploitation with strong partnerships in place, and an increased ability to identify those which may be at risk. We have increased the number of foster carers which bucks the regional trend.

The number of looked after children in Herefordshire remains high and the new plan will provide an opportunity to consider how a stronger early help offer can help to prevent children becoming looked after.

- e. Priority 5 - Addressing challenges for teenagers: Admission episodes (crude rate per 100,000) for alcohol specific conditions is 40.7 for Herefordshire (14/15 – 16/17) and has continued to decline, in line with national trends. There have been improvements in the support available through the 16 plus team which supports young people as they transition into adulthood. The rate of first time entrants to the criminal justice system has reduced (from 565.2 in 2015 to 529 in 2016) although this is still higher than the England average and is a priority area for the Community Safety Partnership.

Increasing opportunities for children and young people to contribute to their local community and to be better prepared for adulthood were key themes through the engagement work with children and young people and are captured in the new plan.

- f. Priority 6 - Children and young people with disabilities: The proportion of Education health and care plans issued within 20 weeks is in the top quartile, 89.84% compared to 55.65 nationally (2016) and Herefordshire has successfully ensured that 100% of children and young people with special educational needs statements now have a plan in place, meeting the national target of April 2018.

Recognition of the additional challenges faced by children with special educational needs and disabilities has been central to the increased focus on improving educational attainment and preparing for adulthood.

- 9. The new draft Children and Young People's plan 2018 – 2023 has involved significant engagement with children and young people, families, providers and staff across partner agencies, areas requiring further focus have been identified and are outlined below.

- 10. Over the next 5 years the partnership pledges are :

Keeping children and young people safe – BE SAFE FROM HARM

Improving children and young people's health and wellbeing – BE HEALTHY

Helping ALL children and young people succeed – BE AMAZING

Ensuring that children and young people are influential in our communities – FEEL PART OF THE COMMUNITY

11. The draft CYP Plan sets out our vision and priorities for children and families in Herefordshire and recognises that everyone has a role to play in making Herefordshire an even better place to grow and prepare for adulthood, including communities, families and children and young people themselves.
12. The Plan (Appendix 1) is intended to be succinct, public facing, and to clearly highlight areas that require partnership focus over the coming 5 years in order to deliver positive change for children and young people in Herefordshire.
13. The priority areas identified are summarised in the attached one page plan (Appendix 2). Both of the final documents will be made available once adopted by Herefordshire Council on our website.
14. The CYP partnership is developing more detailed delivery plans reflecting each of the priority areas. Progress will be reported on a quarterly basis to the CYP Partnership board.

Community impact

15. The county has an older age profile and numbers of children have declined in Herefordshire by around 7% over the last decade. However, the number of under-fives and births has been rising for the best part of the last decade. The next five years are expected to yield a gradual increase in the numbers of children, to around 33,200 by 2023.
16. The new CYP plan has taken into account relevant evidence relating to children and young people in Herefordshire, to ensure that partnership actions address key local priorities. The plan intends to provide a framework within which partners can not only bring about change within their own field, but will also enable partners to work together to target interventions successfully, and ensure maximum impact.
17. The plan also recognises the central role that individuals, families and communities have in improving the lives of children and young people, and this will be further reflected within more detailed delivery plans.

Equality duty

18. Under section 149 of the Equality Act 2010, the 'general duty' on public authorities is set out as follows:
19. A public authority must, in the exercise of its functions, have due regard to the need to -
 - a. eliminate discrimination, harassment, victimisation and any other conduct that is prohibited by or under this Act;
 - b. advance equality of opportunity between persons who share a relevant protected characteristic and persons who do not share it;
 - c. foster good relations between persons who share a relevant protected characteristic and persons who do not share it.

20. The CYP Plan is an opportunity to establish partnership actions which can promote equality, foster positive relations and address discrimination in Herefordshire.
21. The plan includes an Equality statement which states the partnership's commitment to equality and confirms that equality issues will be considered fully at each stage of any development of plans or implementation of new services. Where required this will include the undertaking of individual Equality Impact Assessments.

Resource implications

22. Although the new CYP plan will not have any direct resource implications, it does highlight investment in Children and young people's services across the partnership, and provides an opportunity to identify:
- a. Priority areas which may be responded to more efficiently;
 - b. Emerging issues which may require review of available resources;
 - c. Opportunities to use partnership resources more effectively.
23. Any potential resource implications relating to specific actions will be fully explored within delivery plans and be reported via appropriate governance on a case by case basis.

Legal implications

24. The CYP forms part of the policy framework for the council in accordance with children and young people's plan (England) regulations 2005.

Risk management

25. As an overarching strategic plan there are a number of risks associated with its development as highlighted below:

Risk / opportunity	Mitigation
The plan does not effectively reflect key priorities that relate to children and young people in Herefordshire	The Plan has been developed alongside a number of key stakeholders, including over 300 children and young people. The consultation provides further opportunity to ensure the priorities contained within the plan are reflective of the views of children and young people in Herefordshire.
Ambitions reflected in the plan are unrealistic due to the limited partnership resource to support delivery	It is necessary for the plan to articulate key ambitions of the partnership, this will enable contributors to identify how resources available can be better aligned or more efficiently utilised. Quarterly monitoring will be undertaken in order to track delivery.
Lack of partnership engagement inhibits delivery	Joint ownership of the CYP plan will be explicit at the outset.

The Plan has been aligned to other key partnership plans and strategies including the Health and Wellbeing Strategy for Herefordshire.

Governance arrangements will be robust, with clear accountability.

A risk log will be developed alongside the plan and will be regularly reviewed by the CYP partnership.

Consultees

26. To ensure that the CYP Plan is informed by a broad range stakeholder perspectives a significant number of engagement activities have been undertaken involving over 400 representatives across Herefordshire. This has included direct engagement with children and young people (over 300), professionals involved in the delivery of key actions within the current plan, and a broad range of key partners including providers of services for young people and children. In total over 400 people have contributed to the development of the draft plan either through workshops, partnerships meetings or surveys.
27. Engagement included visits to schools across Herefordshire, groups including carers, children in care, children of service families, disabled children and their families, and children and young people with mental health needs. In summary:
 - a. The importance of mental health was prominent in almost all groups involved in the engagement work: 'There needs to be more understanding and better access to early help. Knowing where to get help is really important'.
 - b. Many groups focussed on increasing aspirations and supporting those who needed extra help to reach their goals: 'There is a lack of support for young people who are transitioning into adults'.
 - c. Some children and young people told us that that they sometimes didn't feel safe in some parts of the county. They also wanted more education on safety, including online safety and on healthy relationships.
 - d. It was clear from talking with children and young people that their communities and the local environment were issues that really mattered to them. They wanted to feel part of the community, find ways to contribute and to have their voices heard. Protecting the local environment, and having places locally where they could mix and be more active was a common theme.
28. The draft plan is now subject to a short period of consultation in order to ensure that it effectively reflects key priority areas, appropriate high level actions and key measures. The consultation period will also provide an opportunity to begin formulating more detailed delivery plans and reporting mechanisms to ensure effective oversight of delivery.

Appendices

Appendix A: The Draft Children and Young People's Plan 2018 - 2023

Appendix B: One Page Plan

Background papers

None